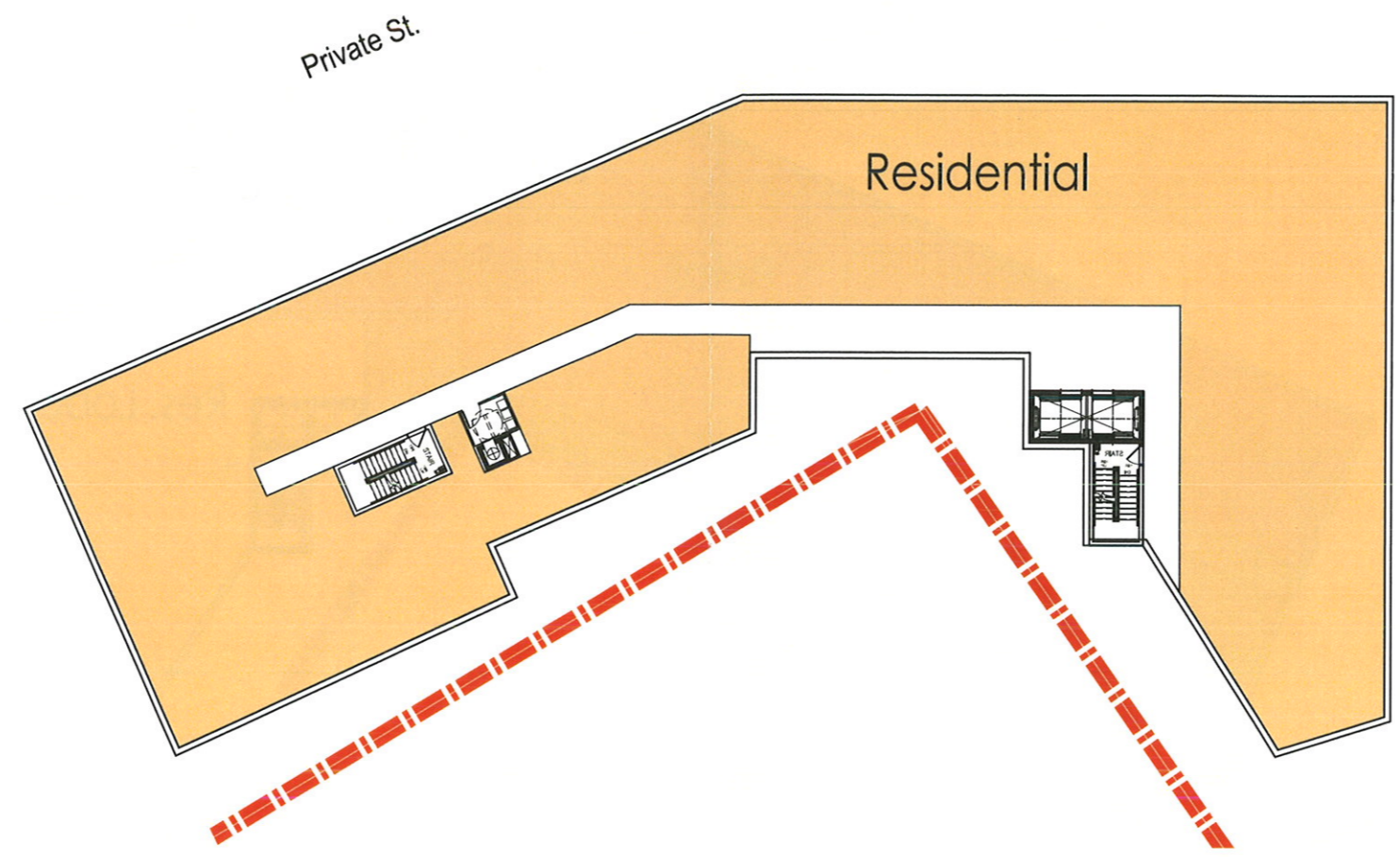


Legend

-  Residential Amenity
-  Residential
-  Potential Retail
-  Retail
-  Service
-  Grocery







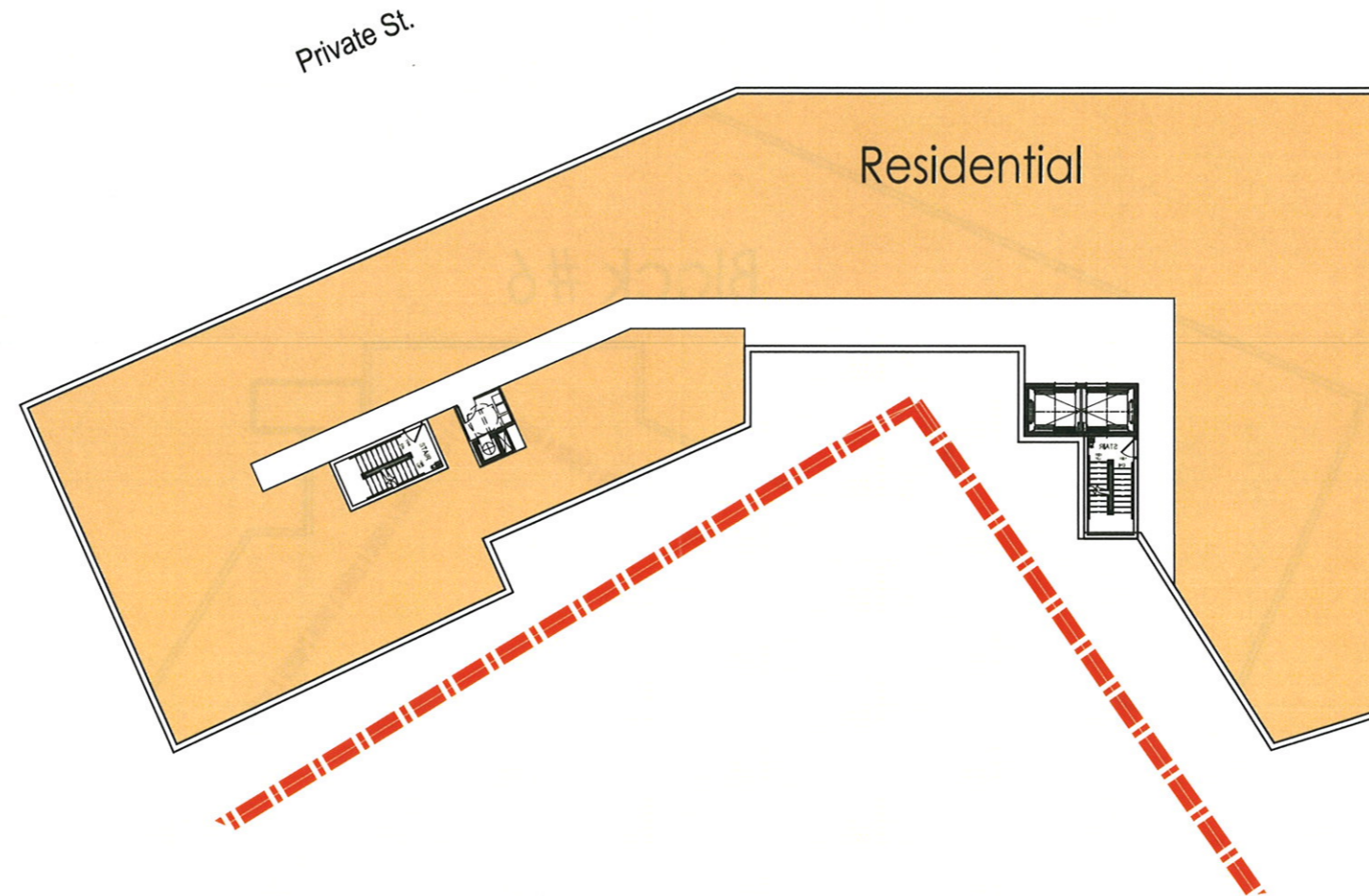
Private St.



KEY PLAN

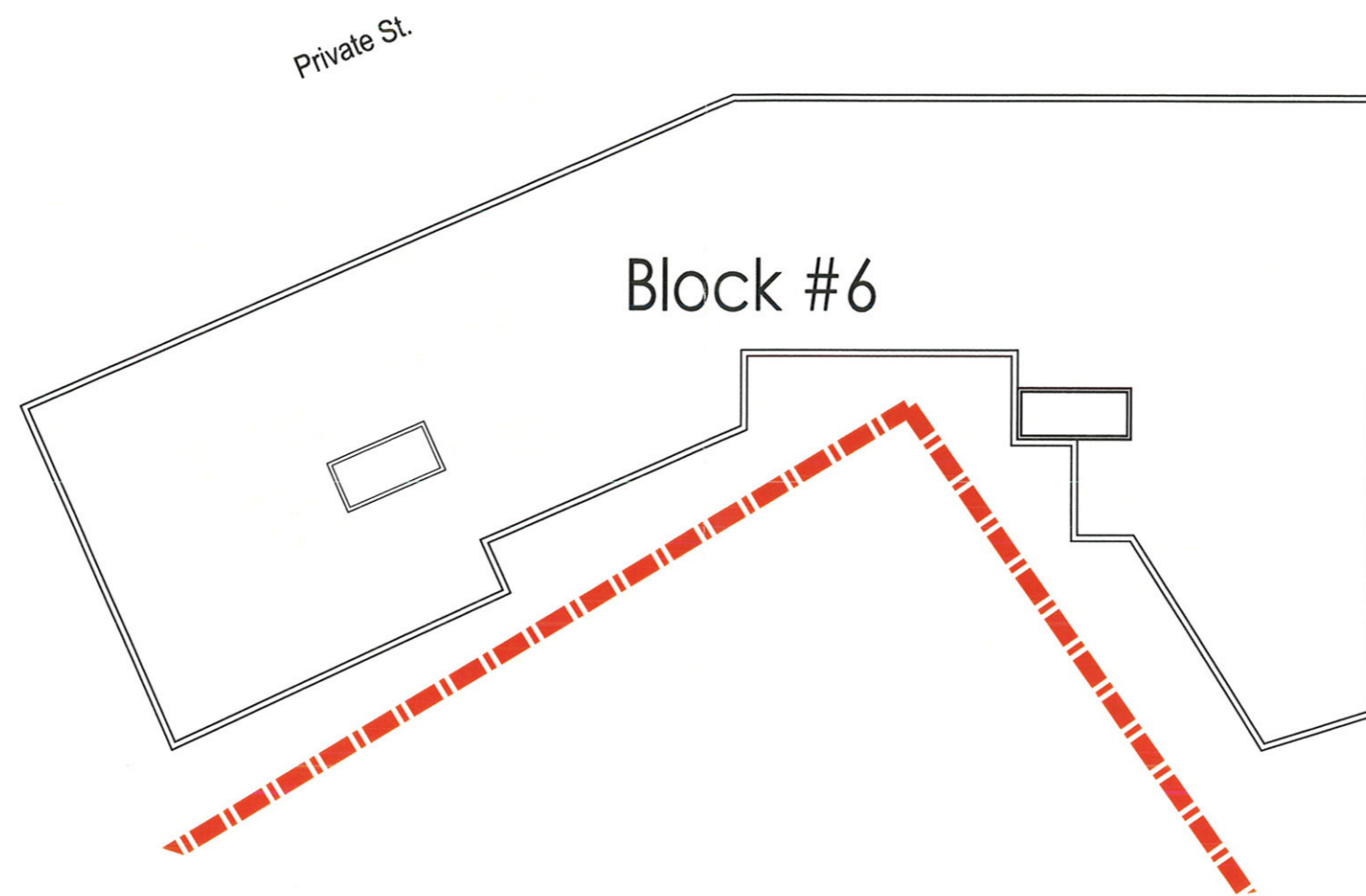
Legend

-  Residential Amenity
-  Residential
-  Potential Retail
-  Retail
-  Service
-  Grocery



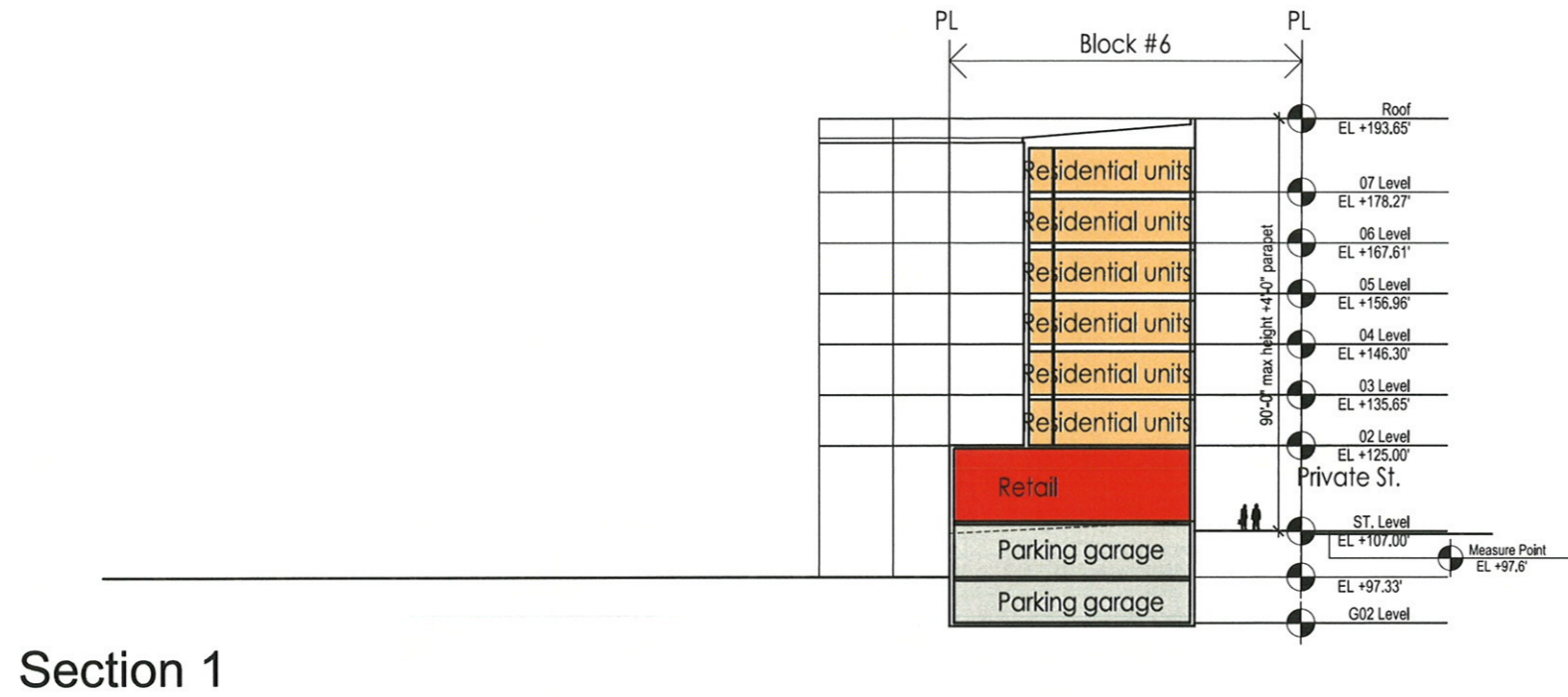
KEY PLAN



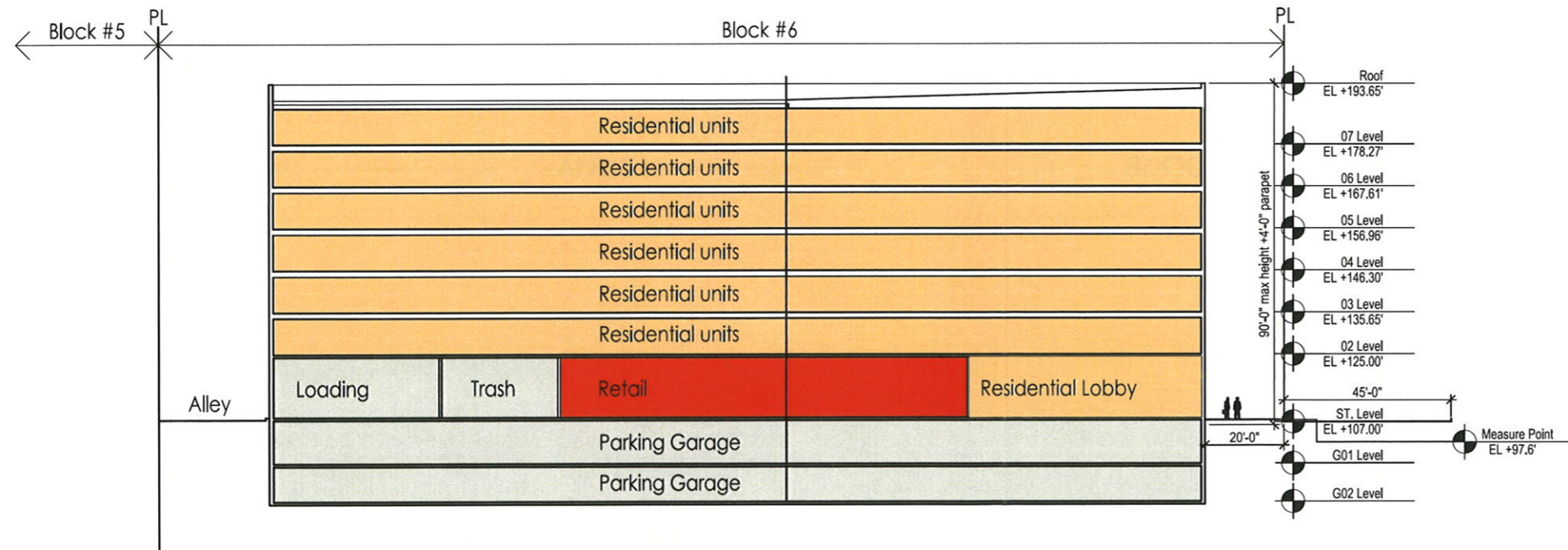


KEY PLAN

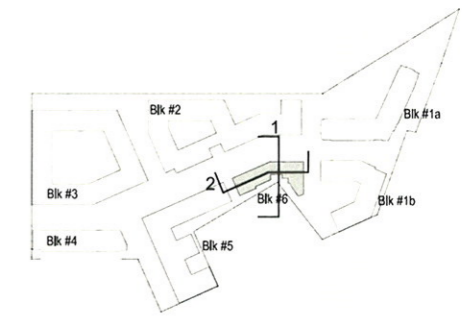




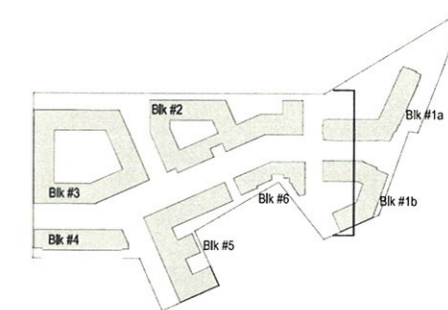
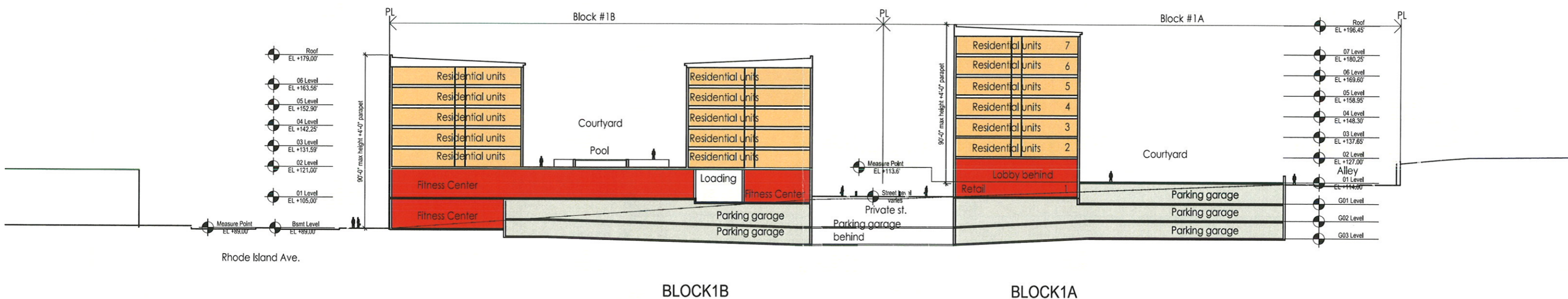
Section 1



Section 2



KEY PLAN



KEY PLAN

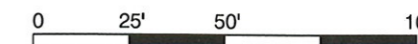
MRP REALTY

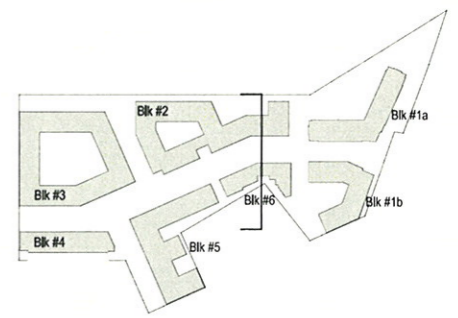
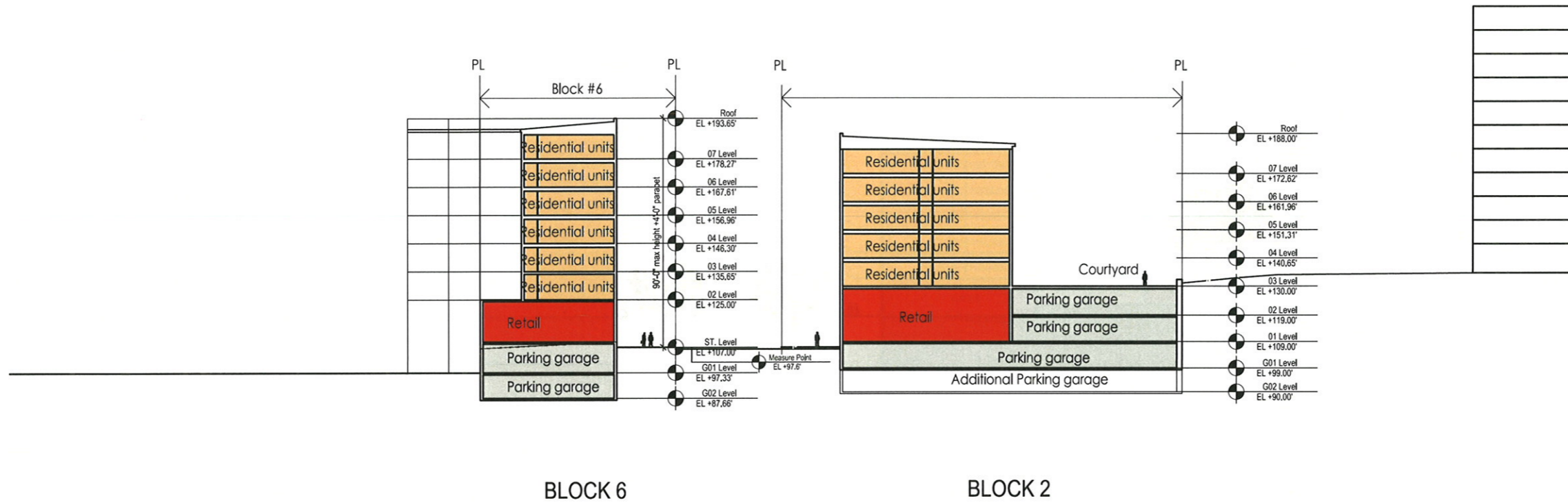
680 Rhode Island Ave. | Washington, DC

July 13, 2015 | 7.101

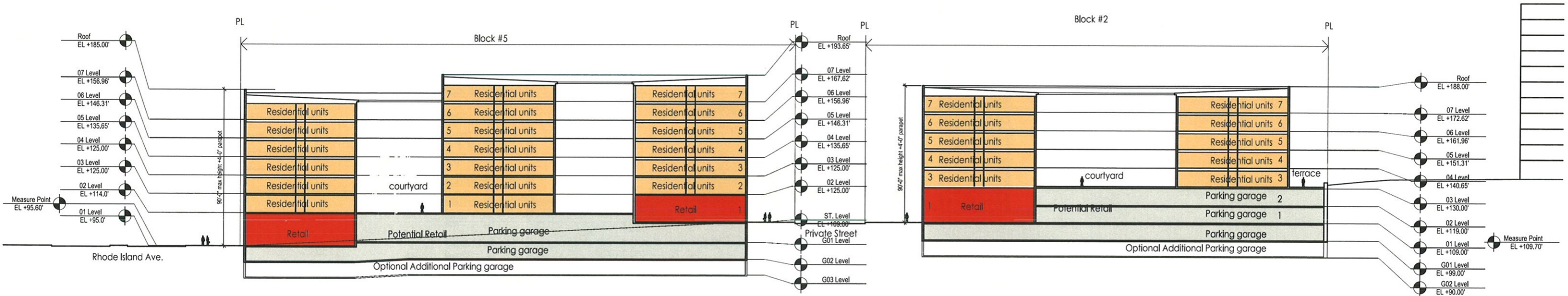
SK+I  
ARCHITECTURE

Site Section Blocks 1A and 1B



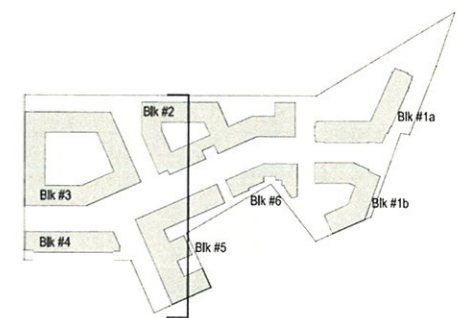


KEY PLAN

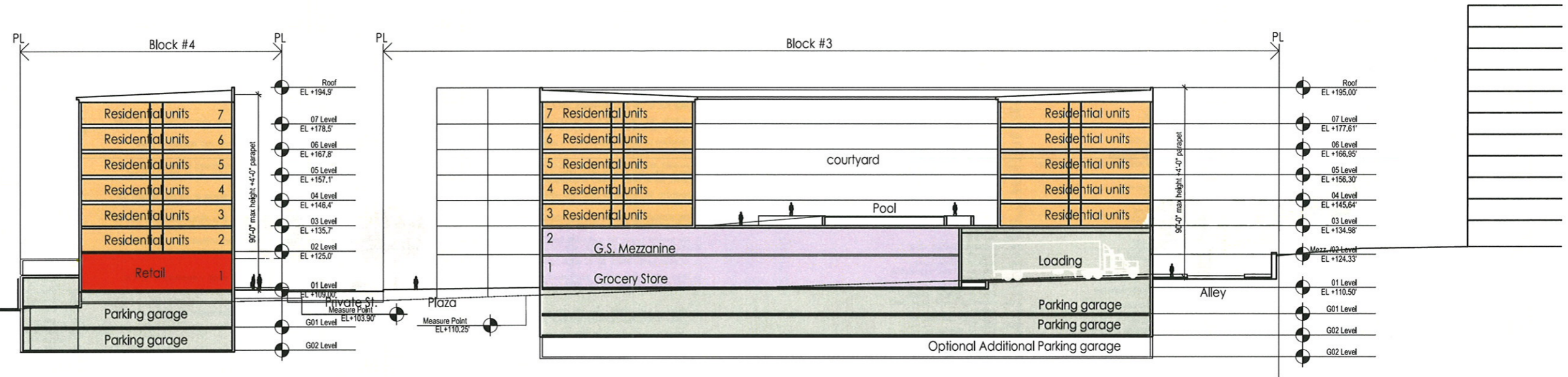


BLOCK 5

BLOCK 2

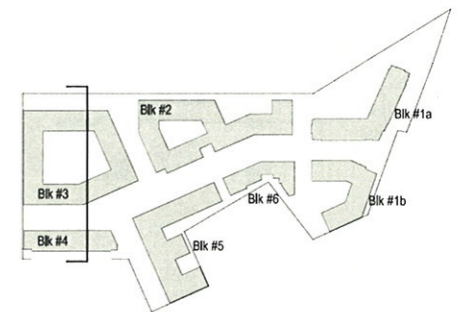


KEY PLAN



BLOCK 4

BLOCK 3



KEY PLAN



